

**MOREHEAD-CAIN
AI PROGRAM SCHOLARS**

MEET THE TEAM



ASHLYN PATTON
Nashville, TN



WILL ATTAWAY
Ruffin, NC



SACHI AKMAL
Charlotte, NC



JACOB ROSENBERG
Jersey City, NJ

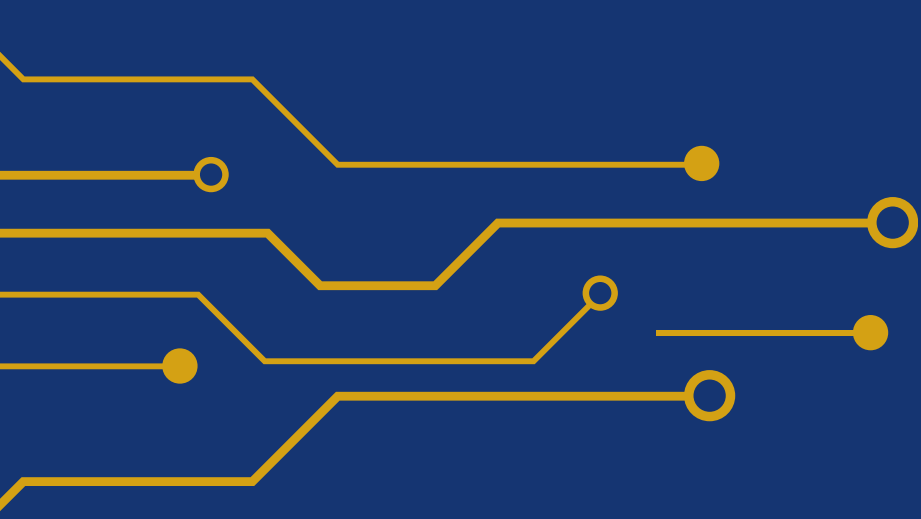


SIDNEY GRIFFIN
Charlotte, NC

Over the past 8 weeks our team has been focused on answering:

How should Louisville Metro Government implement AI to *improve service delivery, response time, and to be proactive instead of reactive* as an organization?





Our team met with...

21

Metro departments
over a 6 week period.



We identified over **250**
individual pain points and
areas for AI implementation.

And learned a lot about
government in the process!



\$2 MILLION

APPROVED AI INNOVATION BUDGET



LICENSES



PILOT PROJECTS



AI TEAM

RFP PROBLEM STATEMENTS



VIDEO
ANALYTICS



INFORMATION
ACCESS FOR
CONSTITUENTS



URBAN
PLANNING
REVIEW
AUTOMATION



EMPLOYEE
INFORMATION
RETRIEVAL
ASSISTANCE

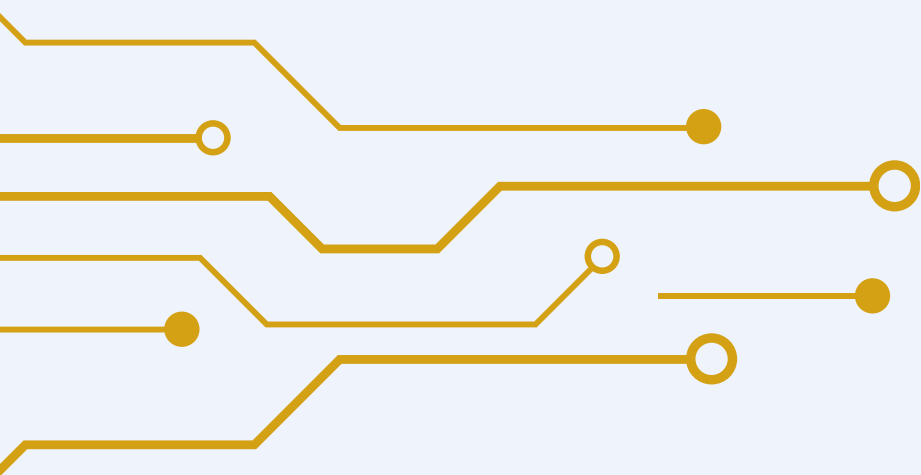
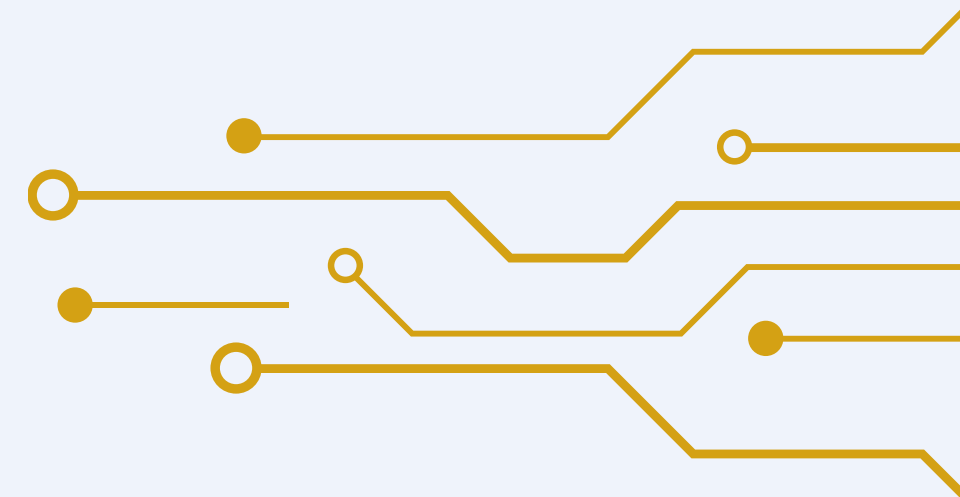


AI ASSISTED
REDACTIONS

OUR AI RFP RECEIVED

75

BIDS FROM VENDORS
(a record!)

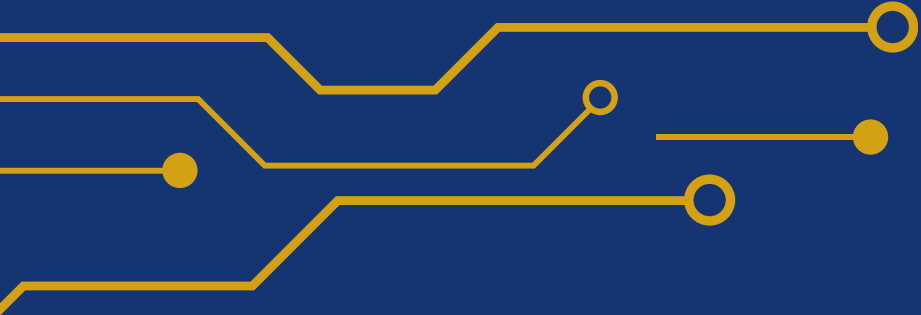


AI POLICY 2.0

MAIN REVISIONS



- Creation of a “policy ecosystem”
- Streamlined procurement of AI tools that are pre-approved by MTS
- Dedicated oversight from AI team from procurement to data governance, etc.
- Supplementary guidelines document for responsible AI usage



AI TEAM

The AI Team's goal is to identify, evaluate, and integrate AI solutions and to cultivate enterprise-wide AI utilization.

CHIEF ARTIFICIAL INTELLIGENCE OFFICER (CAIO)

ARTIFICIAL INTELLIGENCE ECOSYSTEM MANAGER

ARTIFICIAL INTELLIGENCE INTEGRATION ENGINEERS

USING OUR NETWORK



MARINA CARREKER

Founder, Galleon Strategies
Morehead-Cain '03



JAMIE KIMES

Founder, The Idea Garden



AI COMMUNITY OF PRACTICE

WHAT IS IT?

A monthly, peer-driven forum that brings people together to deepen their knowledge and expertise on a subject matter.

WHY DO IT?

Provide a space for AI users – new and advanced – to learn about AI, share ideas, and voice concerns in a low-stakes environment.

OUR AI CoP ATTRACTED

100+
ATTENDEES
FROM 25+ DEPARTMENTS

Office of Social Services **Police** Office of Planning
Public Health & Wellness Human Relations Commission
Air Pollution Control District
Metro Technology Services
Codes and Regulations **Parks & Recreation**
Office of Management & Budget Human Resources
Emergency Management Services
Economic Development **Fire**
Metro TV Arts & Creative Industries **Public Works**
Housing & Community Development

KY GOV TECH SUMMIT



ALL DIRECTORS MEETING



MY METRO HOMEPAGE



MEETING THE MAYOR





THANK YOU

FOR HELPING US SHAPE A FUTURE-FORWARD LOUISVILLE

